

# EARTHWORM DISSECTION

## PRE-LAB ASSIGNMENT

### Part I - EARTHWORM QUESTIONS (p.158 / pp.175-176)

1. What is meant by the phrase, "tube-within-a-tube" body plan.

---

---

---

2. List, **IN ORDER**, the digestive organs found in an earthworm.

---

3. What is the function of the *typhlosole*?

---

---

4. What is *hemoglobin*?

---

---

5. The circulatory system of the earthworm is an example of a "*closed*" circulatory system. What is a "*closed*" circulatory system?

---

---

6. Briefly describe the **STRUCTURE** and **FUNCTION** of the *aortic arches* found in earthworms.

---

---

---

---

**Part II - HUMAN QUESTIONS** (pp.160-166 / pp.175-176)

7. List, **IN ORDER**, the organs that make up the digestive tube found in humans.

---

---

8. **HOW** is food moved through the human digestive tract?

---

---

9. What are **VILLI** and what function do they serve in the digestive process?

---

---

---

10. Briefly describe the **FUNCTION** of each type of blood vessel found in humans

---

---

---

11. List the four chambers that make up a human heart.

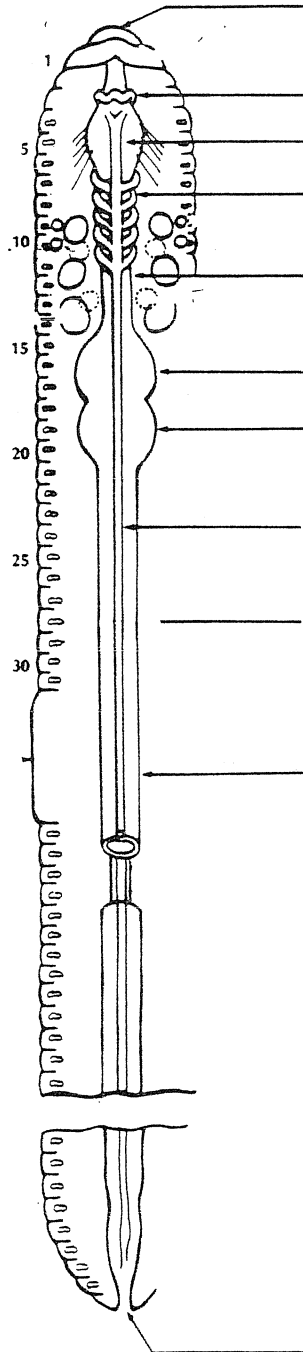
---

# EARTHWORM DISSECTION

## SUMMARY SHEET

- Using the earthworm map on p. 4, color and label the diagram below. Use colored pencils to distinguish the different systems.

**KEY**  
**BLUE** - Digestive System  
**RED** - Circulatory System



2. How many body segments are there between the mouth and clitellum? \_\_\_\_\_

3. Look at the anterior and posterior ends of the earthworm. What parts of the earthworm's anatomy are found at each end?

---

---

4. Using your textbook, fill in the chart below regarding the digestive system of the earthworm.

ORGAN	FUNCTION
Mouth	
Pharynx	
Esophagus	
Crop	
Gizzard	
Intestine	
Anus	

5. Using your textbook, fill in the chart below regarding the circulatory system of the earthworm.

ORGAN	FUNCTION
Aortic Arches	
Blood Vessels	
Blood	

6. Using your textbook, fill in the chart below regarding the digestive system of the human.

<b>ORGAN</b>	<b>FUNCTION</b>
<b>Mouth</b>	
<b>Esophagus</b>	
<b>Stomach</b>	
<b>Small Intestine</b>	
<b>Large Intestine</b>	
<b>Rectum</b>	
<b>Anus</b>	

7. Using your textbook, fill in the chart below regarding the digestive system of the human.

<b>ORGAN</b>	<b>FUNCTION</b>
<b>Salivary Gland</b>	
<b>Liver</b>	
<b>Gall Bladder</b>	
<b>Pancreas</b>	

8. Using your textbook, fill in the chart below regarding the pathways of human circulation [Sec. 9-3].

Pathway	FUNCTION
Pulmonary Circulation	
Coronary Circulation	
Hepatic-Portal Circulation	
Renal Circulation	

9. Compare and contrast the structure and function of each of the following structures:

*Aortic Arches : Human Heart*

---

---

---

---

---

---

---

---

---

---

*Crop and Gizzard : Human Stomach*

---

---

---

---

---

---

---

---

---

---